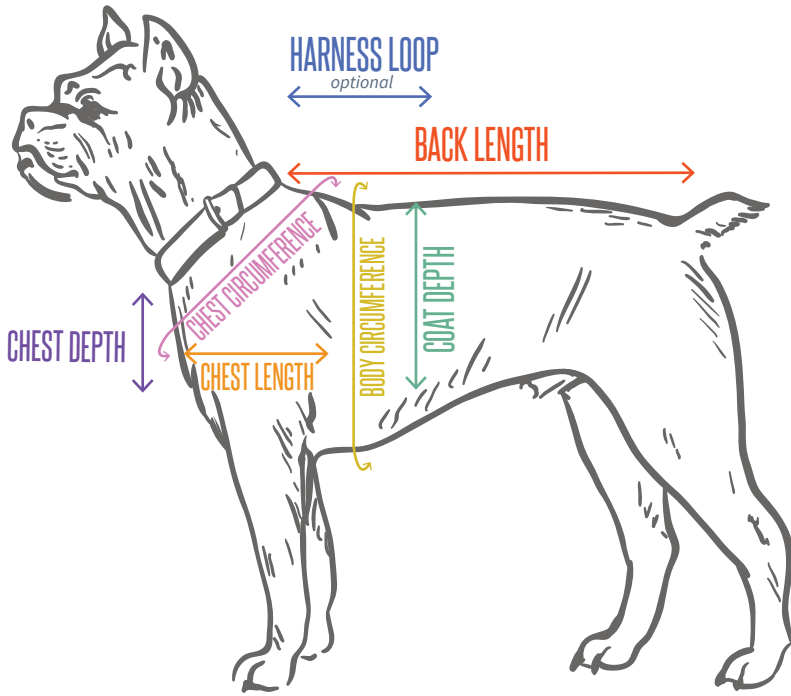


Wholefully[®] DOG COAT PATTERN

Your Dog's Measurements



BACK LENGTH

Base of neck where collar sits to base of tail

HARNESS LOOP optional

Base of neck where collar sits to where leash connects to loop on a harness. Only needed if you want to make a hole in the coat to connect a leash to a harness.

COAT DEPTH

Top of spine to however long you want the coat to fall down the side of the dog

BODY CIRCUMFERENCE

All the way around the widest part of the dog's body (usually right behind the front armpit)

CHEST CIRCUMFERENCE

All the way around the front of the dog, just below where the collar sits

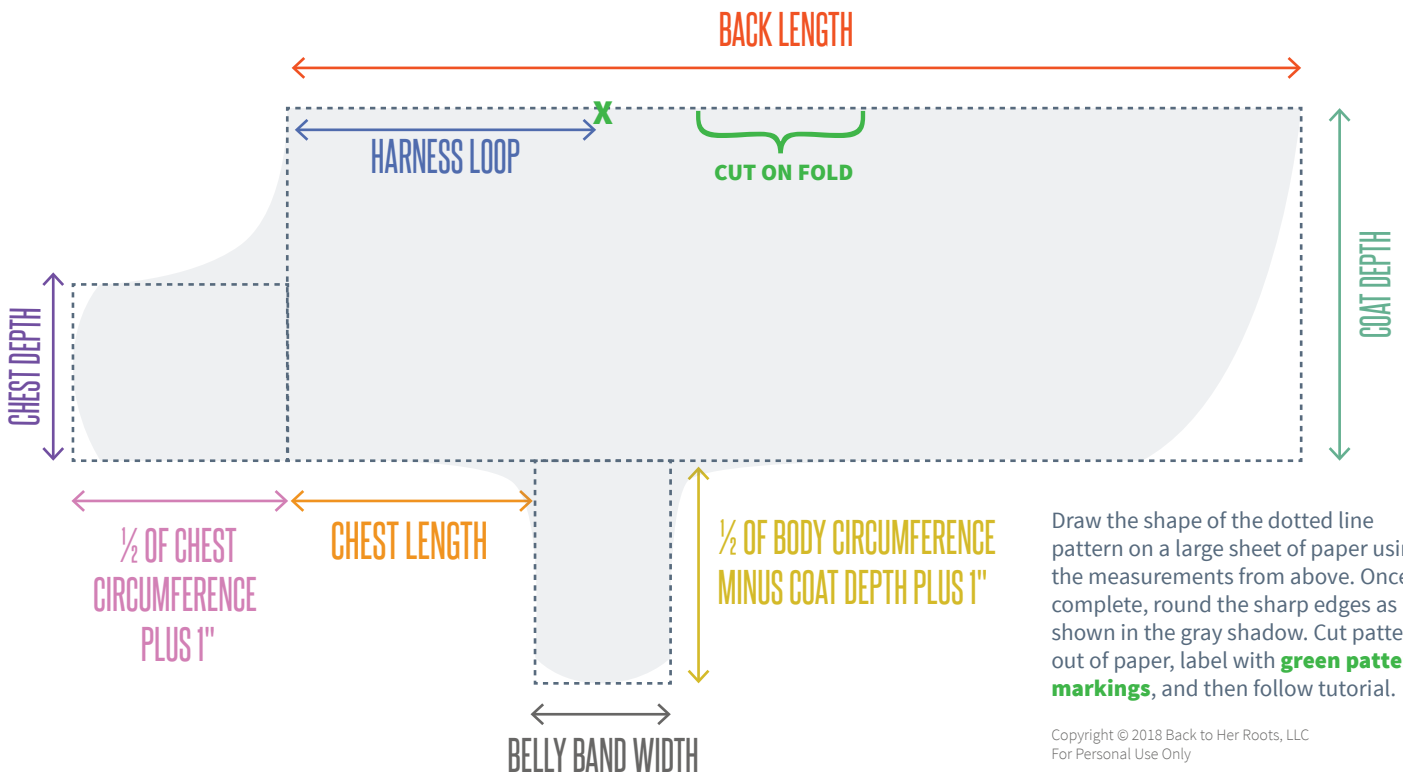
CHEST DEPTH

Where collar sits on the front of the neck to just above where the front leg connects

CHEST LENGTH

From the front of the chest to just behind where the front armpit is

The Pattern



Draw the shape of the dotted line pattern on a large sheet of paper using the measurements from above. Once complete, round the sharp edges as shown in the gray shadow. Cut pattern out of paper, label with **green pattern markings**, and then follow tutorial.

Copyright © 2018 Back to Her Roots, LLC
For Personal Use Only

Use 3" for a small dog, 4" for a medium dog and 5" for a large dog