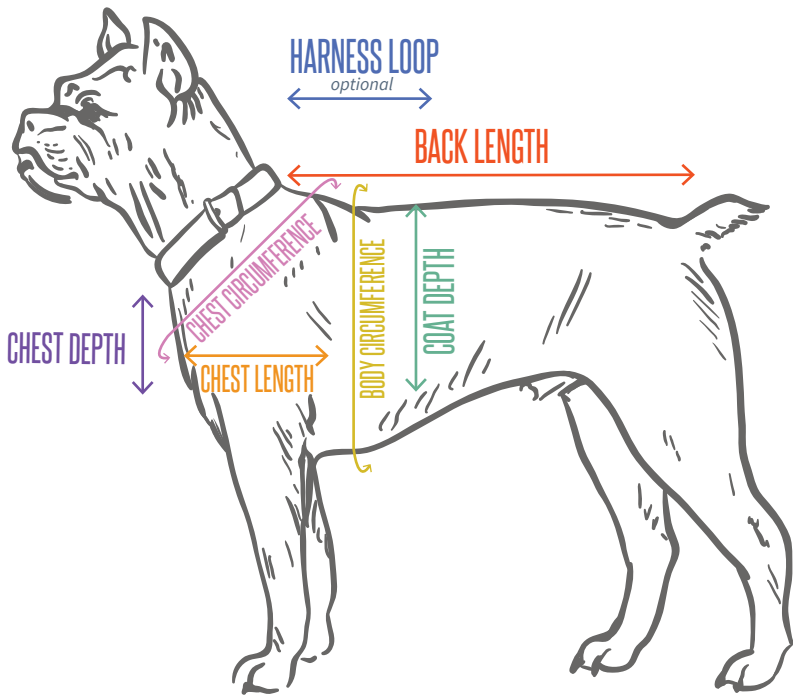


# Wholefully® DOG COAT PATTERN

Your Dog's Measurements



## BACK LENGTH

Base of neck where collar sits to base of tail

## HARNESS LOOP optional

Base of neck where collar sits to where leash connects to loop on a harness. Only needed if you want to make a hole in the coat to connect a leash to a harness.

## COAT DEPTH

Top of spine to however long you want the coat to fall down the side of the dog

## BODY CIRCUMFERENCE

All the way around the widest part of the dog's body (usually right behind the front armpit)

## CHEST CIRCUMFERENCE

All the way around the front of the dog, just below where the collar sits

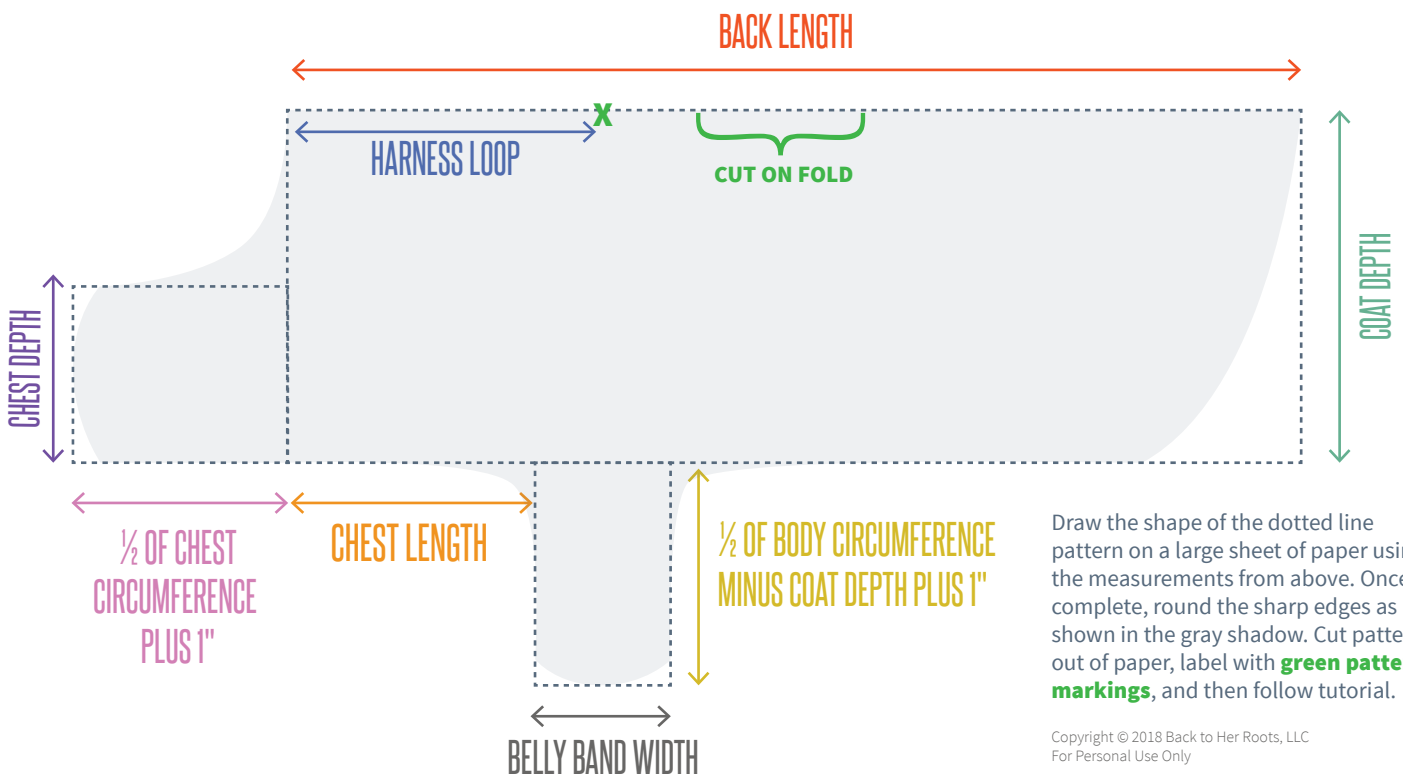
## CHEST DEPTH

Where collar sits on the front of the neck to just above where the front leg connects

## CHEST LENGTH

From the front of the chest to just behind where the front armpit is

The Pattern



Draw the shape of the dotted line pattern on a large sheet of paper using the measurements from above. Once complete, round the sharp edges as shown in the gray shadow. Cut pattern out of paper, label with **green pattern markings**, and then follow tutorial.

Copyright © 2018 Back to Her Roots, LLC  
For Personal Use Only

Use 3" for a small dog, 4" for a medium dog and 5" for a large dog